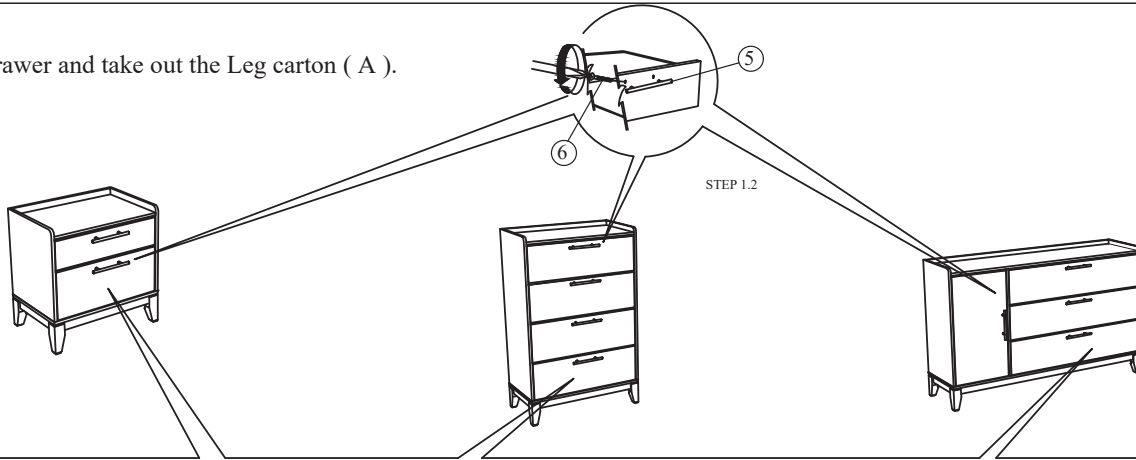


ASSEMBLY INSTRUCTION

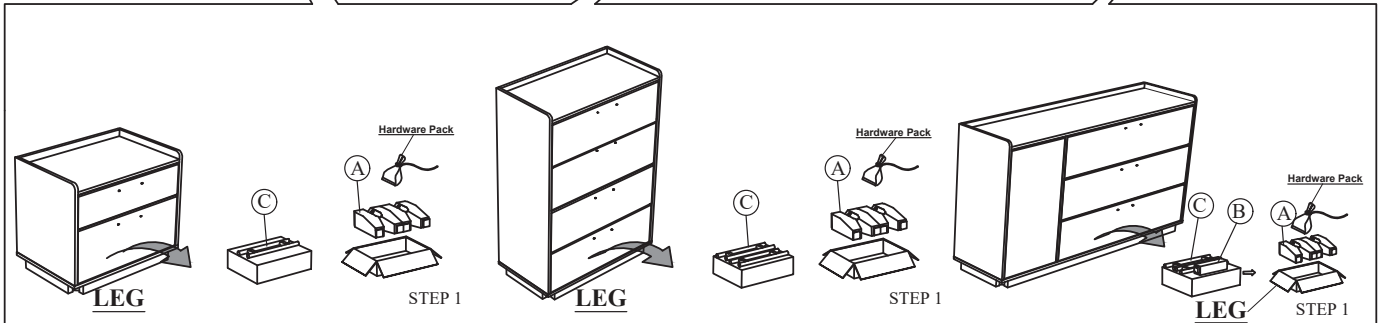
FOR HD101A / HD102A - NIGHTSTAND ,CHEST & DRESSER

STEP 1

Pull the drawer and take out the Leg carton (A).



STEP 1.2



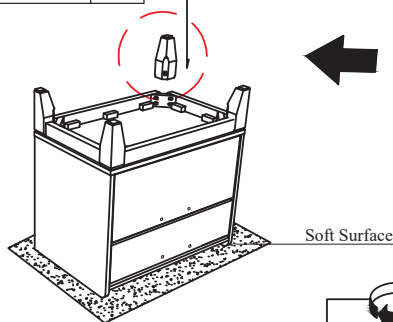
STEP 3

Assemble the Bun Foot (A) as shown.

Night Stand

No	Hardware List	Qty
5	HANDLE	2 pcs
6	Truss Head Machine Screw m4 x 20mm	4 pcs

Remark : Turn the Night Stand to upside down position as shown.



Soft Surface

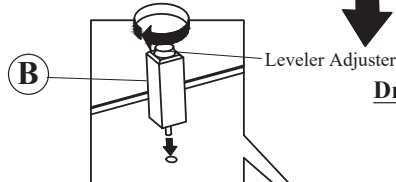
Chest

Remark : Turn the Chest to upside down position as shown.

No	Hardware List	Qty
5	HANDLE	4 pcs
6	Truss Head Machine Screw m4 x 20mm	8 pcs



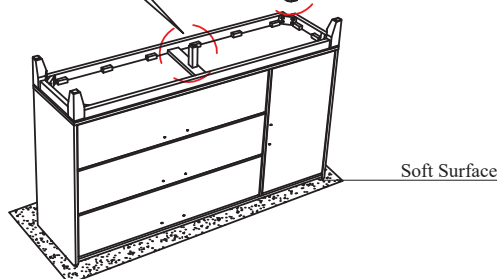
Soft Surface



Dresser

Remark : Turn the Dresser to upside down position as shown.

No	Hardware List	Qty
5	HANDLE	4 pcs
6	Truss Head Machine Screw m4 x 20mm	8 pcs



Soft Surface

No	Part List	Qty
A	LEG	4 pcs
B	BOTTOM CENTER LEG (30 x 30 x 120MM)	1 pc

No	Hardware List	Qty
1	JCBC Bolt m6x50mm Blk	4 pcs
2	Spring Washer 1/4" Rbw	4 pcs
3	Flat Washer 1/4"Dx13mmOD Blk	4 pcs
4	Allen Key m4x65mm With Ball Blk	1 pc

NOTE : MUST TIGHTEN SCREWS PERIODCALLY WITH USE SCREW WILL BECOME LOOSE CHECK TIGHTNESS OF ALL SCREW EVERY 6-8 WEEKS.